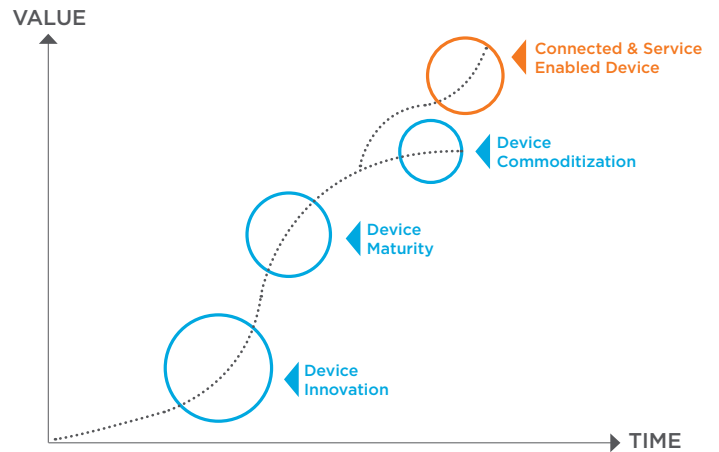


FLEXIBLE + SCALABLE MEDICAL-GRADE CONNECTIVITY

Powering Intelligent Care Everywhere

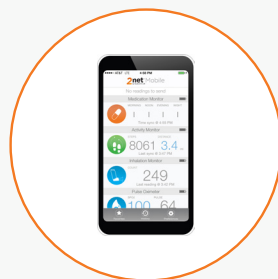
CAPTURING NEW VALUE WITH DATA + INTELLIGENT SERVICES

Medical device manufacturers are uniquely positioned to capture new value by harnessing the current shift from episodic care models to continuous care models that follow the patient. By digitizing and connecting their business models, companies can provide remote care services that enable health systems to move patients to lower-cost care settings with confidence. By connecting near real-time data and unlocking actionable insights, care can be delivered when and where it is needed, providing user experiences that help engage and activate patients.



2net™ Hub

A plug-and-play communications device that integrates with wide- and short-range radios, the 2net™ Hub offers medical-grade connectivity with an open ecosystem of devices and sensors. It's flexible, highly secure and effortless for the end user.



2net™ Mobile

An embeddable software module for third-party mobile applications that enables the secure capture and transmission of medical data to and from the 2net Platform. It effectively transforms a smartphone or tablet into a medical-grade gateway, for patients at home or on the go.



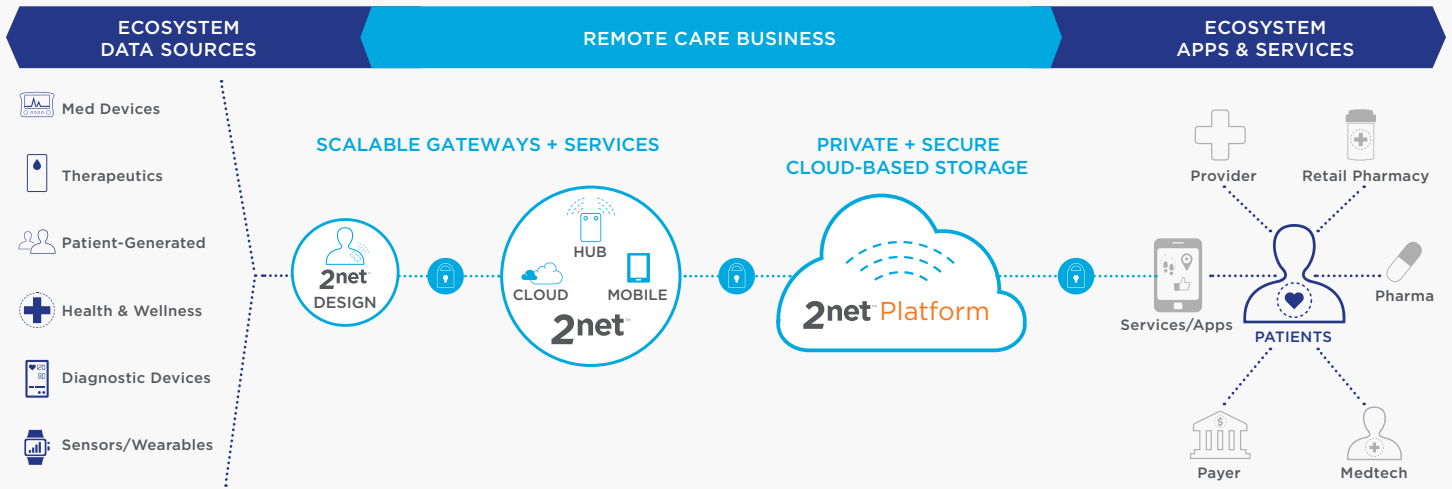
2net™ Platform

Powering the next generation of therapies and medical devices, 2net Design services offer turnkey low-power connectivity solutions and technology licensing. These integrated, wireless reference designs allow companies to securely and rapidly deploy connected health solutions.

AN EXPERIENCED LEADER, A CATEGORY-LEADING PLATFORM

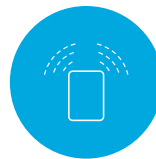
With 30 years of wireless experience and one of the world's largest connected health ecosystems, Qualcomm Life is an industry leader in medical-grade connectivity and design. The 2net suite of solutions and services provides the infrastructure for a wide range of remote care use cases and serves as the underpinning of the Internet of Medical Things (IoMT).

MEDICAL-GRADE END-TO-END CONNECTIVITY



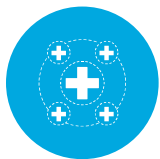
MEDICAL-GRADE INFRASTRUCTURE UNDERPINNING THE IOMT

- Multiple safeguards network-wide to protect data in transit and at rest
- A defense in depth infrastructure with 11 layers of authentication, encryption and access control
- 2net Quality Management System based on FDA and EU-MDD regulations



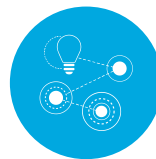
FLEXIBLE GATEWAYS FOR SCALABLE DEPLOYMENT

- Multiple gateways to suit a wide range of medical device use cases
- Bring-Your-Own-Device (BYOD) flexibility with 2net Mobile enables compatibility with market leading mobile phones/tablets and OS combinations
- Exceptional user experience that is intuitive and effortless to support device adherence



EXPANSIVE VENDOR-NEUTRAL ECOSYSTEM

- One of the world's largest connected health ecosystems
- Device and application agnostic architecture to accelerate business models
- Trusted and deployed at scale by leading health care companies



TURNKEY DESIGNS FOR BETTER OUTCOMES

- In-depth understanding of mobile trends to help future-proof medical device connectivity solutions
- Wireless reference designs help streamline new product development
- Complete technology transfer packages that include design files, chip and battery specifications, documentation and operating software

Qualcomm Life Intelligent Applications can improve the quality and timeliness of care. Learn more at qualcomm.life